



Remote Diesel Engine Control

Intelligent Diesel Engine Asset Management System

The engine auto start controller is designed for the off-road stationary diesel engine market. The software is application driven. The controller's primary function is the management of your diesel engine and the equipment it is driving. The software and hardware are designed to lower the cost of running and owning your asset. It will reduce your fuel and maintenance costs but most of all increase the engine's life cycle.



Overview

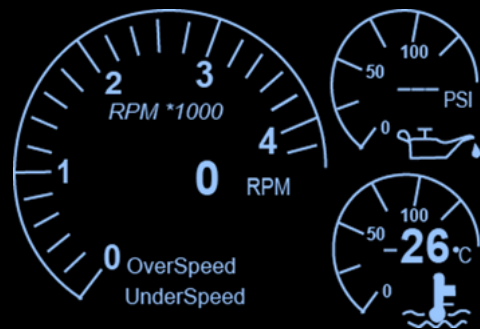
The units work with a wide range of diesel engines. Automatic engine speed control is offered on all engines, whether electronic or mechanical. This feature can adjust the engine speed to a set speed point or vary the engine speed with respect to an external 4-20mA sensor. All automatic throttling options come with adjustable engine warm up, cool down and line fill timers

Control Units

The control units have direct access tactile buttons, which allows you to view engine FAULTS/WARNINGS quickly as well as alter timers and halt/pause the engine.

Display

The control unit's display screen is easy to read with large icons and characters. The LCD can be viewed in direct sunlight.



Wiring Looms

The controller is normally supplied in a kit form. This kit includes the controller in an enclosure, an engine wiring loom, a throttle actuator, secondary solenoids, mounting brackets and any other components your build will require. Just tell us what you need and we will supply it. All of the kits will save you on installation time and costs.



Satellite Connectivity

The controller's satellite telemetry capabilities make certain you will always be connected to your asset via a smartphone, tablet or computer anywhere in the world.

Features K27 Model

- Auto start on 2 floats or remotely connected sensors
- Run to fixed speed with PWM
- Pump pressure protection input
- Pump flow protection input
- Low oil gauge & shutdown
- Loss of prime protection input
- RPM Reading overspeed shutdown
- High coolant temp gauge & shutdown
- Fuel level reading and protection.
- 9.36VDC Compatible
- 100 hour run timer
- J1939 CANBUS ready
- MODBUS / Telemetry ready
- Engine hours run count
- Configurable Digital Inputs
- Fault history logger
- Battery voltage monitor/display
- IP66 Control module UV stable
- Low Radiator level shutdown

Additional Features K37

- Bearing Temp reading/shutdown
- Variable speed control to pump pressure sensor
- Engine running relay output
- High coolant temp gauge & shutdown
- Engine hour meter
- 7 day 24 hour Start/Stop timer
- Start/Stop engine directly connected via
 - pressure sensor
 - pump pressure sensor
 - level sensor



www.theyabby.com.au

