



**2021  
PRODUCT BROCHURE**



# Distributor Partners

Yabby Sensors have established a network of over 50 specialised local distributors



Our distributors are trained and supported and are essential partners with ongoing local support and service

If you are interested in learning more about Yabby Sensors please visit or contact one of our local distributors. You can locate them on our website at

[www.theyabby.com.au/distributors/](http://www.theyabby.com.au/distributors/)

If there is none in your region please contact us directly

admin@theyabby.com.au  
theyabby.com.au  
13000 YABBY (92229)





Yabby Sensors and Consulting is a turnkey water management solution and technology provider to the agricultural and resource sectors.

Yabby offer complete water management support to our partners and clients that is enhanced and supported by technology.

We are not about selling sensors unless they will ultimately make or save you money, make your life easier, keep you safe (and out of trouble with regulators) and are part of a well considered incorporated system and platform that is future proof.

With decades of experience we actively listen to our clients and spend time understanding your business and needs. We are well placed to partner with you to solve your problems and deliver cost-effective outcomes

# The Yabby Platform



Yabby sensors are remotely monitored with our custom cloud based platform. Interrogate volume and level trends, change sampling intervals and set SMS and email alerts. Our platform is flexible and modular meaning we can set it up the way you like from our library of maps, charts, gauges and controls.

## FEATURES



Monitor environmental sensors and device locations and parameters



Configure sample rates, device outputs and variable alerts



Control device outputs such as pumps, valves and gates



Receive SMS or email alerts based on variable thresholds



Download device data as csv files and images



## OTHER SERVICES

- Integrate other sensors to our platform
- White label the platform with your company branding
- Send your sensor data to third party platforms

# Our Products

The following products are not an exhaustive list of all products that Yabby Sensors can provide. We are continually innovating, developing and improving products. The global industry is also developing technology at a rapid rate. Our products can often have additional sensors or services added and we also provide bespoke solutions. Our solutions come with a choice of NBIoT/CATM1, Nanosatellite, Satellite, Zigbee, LoRaWAN and WiFi and are categorised into three series.



## YABBY SERIES

Low powered, long lasting battery powered solutions for water and soil monitoring.



## PARROT SERIES

High powered multichannel datanodes that can measure multiple parameters at once, control and monitor pumps and a variety of other inputs.



## KINGFISHER SERIES

GPS tracking for livestock, equipment, vehicle and safety management.





# YABBY SERIES

Low powered, long lasting battery powered solutions for water and soil monitoring.

Industry leading IoT devices for monitoring applications. The Yabby range of versatile and rugged low-power monitoring devices are trusted globally to outperform with industry-leading battery life, powerful device management tools and flexible integration options. With recognized expertise in battery powered monitoring, the devices are trusted by businesses, network operators and companies across the world to monitor when others can't.



The feature rich and versatile battery powered range have many monitoring applications such as level, volume, water quality, flow, soil moisture, pressure, rainfall, temperature and humidity.

In combination with our flexible platform the series can also provide remote pump and valve control. A number of the units can be used in combination to turn on and off pumps based on field variable (e.g. levels, flow, soil moisture)

The devices are highly accurate with mm precision. You can remotely configure alerts (SMS, email) and sampling rate. They are designed to meet outdoor applications with a durable IP67/68 waterproof housing and sensor and are ultra-low power with up to seven years for most applications based on four readings a day. The range includes global navigation satellite system (GNSS) for geolocation.

# Yabby floating level sensor



4G LTE-M / NB-IOT, Nanosatellite, LoRaWAN



Feature-rich battery-powered floating water level sensor for dam and tank monitoring applications. Can be positioned in the deepest part of the dam to measure the full range of water levels

## FEATURES

Provides the full range of water levels from the deepest part of your storage

Configure sample rates, device outputs and variable alerts

Wide range of applications including dams, storages and tank level/volume

Options to include water quality sensors

Includes high quality pressure transducer

Easy to install, no tools required

# Yabby level sensors

4G LTE-M / NB-IOT, Nanosatellite, LoRaWAN, Bluetooth, ZigBee



Feature-rich battery-powered water level sensor for tank and groundwater monitoring applications. Additional Rainfall, Temperature and Humidity Monitoring or On/Off Pump Control available.

## FEATURES

Monitor environmental sensors and device locations and parameters

Configure sample rates, device outputs and variable alerts

Control device outputs such as pumps, valves and gates

Receive SMS or email alerts based on variable thresholds

Download device data as csv files and images

Multiple inputs available



# Yabby pump control & level



CELLULAR 4G LTE-M / NB-IOT

Feature-rich battery or external powered NB-IoT ON/OFF pump switch for AC/DC electric pump applications. Additional Water Level, Rainfall, Temperature and Humidity Monitoring available.



## FEATURES

Precision pressure transducer for accurate water level monitoring

Configure sample rates, device outputs and variable alerts

Flexible Power Options - Batteries with up to 7 years battery life or wired to permanent power

Wide range of applications including dams, storages and tanks

Two-way connectivity operating in near real-time

Typical latency <20 sec

# Yabby satellite pump control



Geostationary (GEO) Satellite



Two-way satellite connectivity ideal for remotely monitoring and controlling fixed and portable assets used and where access may be restricted, including pipelines, flow meters, pumps, generators and tanks

## FEATURES

Two-way satellite connectivity operating in near real-time

Typical latency <15 sec, 100 bytes

Control device outputs such as pumps, valves and gates

Receive SMS or email alerts based on variable thresholds

Solar or directly powered from application

Configure sample rates, device outputs and variable alerts and multiple inputs available





# KINGFISHER SERIES

GPS tracking and telematic devices for livestock, equipment, vehicle and safety management

By tracking and collating the data your assets generate, you can run operations more efficiently, improve the safety of your staff and potentially increase your fuel tax credits (FTC) return.

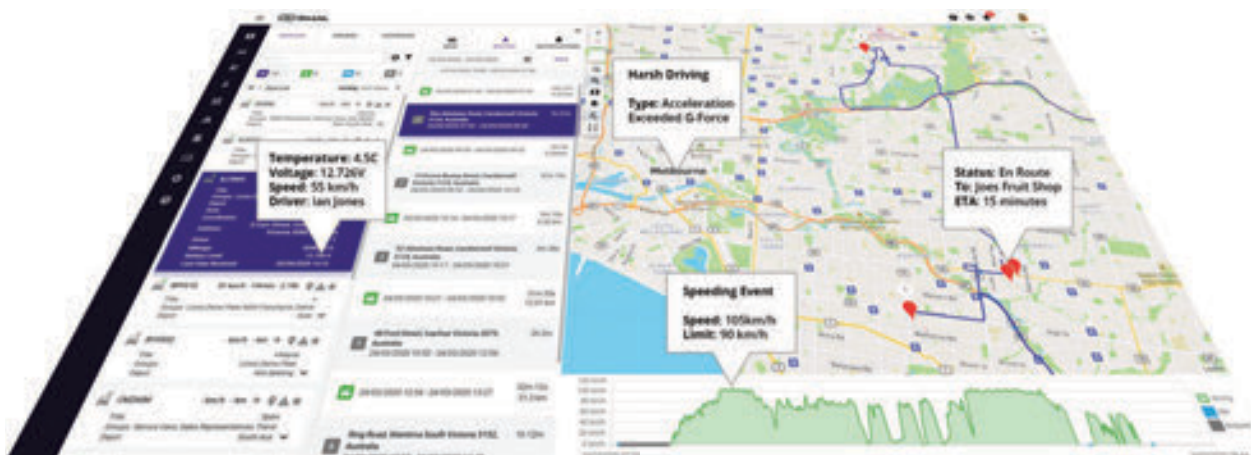
## Better Management of Your Assets

Vehicles and equipment are probably the most important parts of your business, but they can be costly to maintain. Monitoring them is essential to minimise the risk of unforeseen downtime during a crucial part of the season, however, maintaining visibility across your assets can be difficult as they are often far away from your base. Vehicle and asset tracking allows you to monitor your assets remotely and make more effective business decisions.

Important data such as engine diagnostics, fuel levels, service schedules are recorded, and alerts scheduled to notify you when it's time for a service. It also allows you to remotely check where your machinery is working. This real time data also confirms if your drivers are on schedule for deliveries. The data can be converted into easy-to-read reports at the end of the month, giving you an overview of your assets. These reports help you understand if your assets are being utilised to their optimum.

## Improve Safety and Ensure Compliance

Chain of Responsibility now including producers and suppliers of goods, following safety procedures is more important than ever. This is especially important considering how dangerous the industry can be, with 75 per cent of reported workplace deaths due to vehicles such as tractors and quad bikes



# Kingfisher Tiny

CELLULAR 2G OR 4G LTE-M / NB-IOT



Tiny, lightweight and ultra-rugged battery-powered GPS tracking device with up to 3 years of battery life for asset tracking and theft recovery.

## FEATURES

WiFi Positioning for Indoor Asset Tracking

Cellular tower fallback for positioning when no WiFi networks are detected

Weatherproof and ultra-rugged IP67 housing with compact and ergonomic design

Powered by 3 x AAA Batteries with up to 6.5 years battery life

Accelerometer for Smart Movement based tracking

# Kingfisher Compact

CELLULAR 2G OR 4G LTE-M / NB-IOT



Ultra-rugged, long-life battery- powered GPS tracking device with up to 7 years battery life for long term asset tracking, theft recovery, and more

## FEATURES

High-precision GPS/GLONASS tracking device plugs into existing OBDII ports

Weatherproof and ultra-rugged IP67 housing

Power by 3x AA Batteries with up to 7 years battery life

Compatible with LTC Batteries for tracking in extreme temperatures

Built-in Battery Meter for remote Battery Life Monitoring and Remaining Life Predictions

Accelerometer for Smart Movement Based Tracking

# Kingfisher Premium 1

CELLULAR 2G OR 4G LTE-M / NB-IOT



Compact and affordable vehicle tracking device featuring simple plug and play installation for fleet management, driver safety and behavior monitoring, theft recovery, and more.

## FEATURES

High-precision GPS/GLONASS tracking device plugs into existing OBDII ports

Speeding, harsh braking and cornering, accident and rollover detection

Electronic Odometer Readings

Accelerometer for Smart Movement Based Tracking

Multiple installation options (traditional plug and splitter installation, or secure with cable ties)

# Kingfisher Premium 2

CELLULAR 2G OR 4G LTE-M / NB-IOT



Feature-rich and affordable vehicle tracking device with inputs/outputs, remote immobilization for fleet management, driver ID, driver safety and behavior monitoring, theft recovery, and more.

## FEATURES

High-precision GPS/GLONASS tracking device plugs into existing OBDII ports

Hardwired to permanent power for real-time tracking

2 x Digital Inputs, 1 x Switched Ground, Digital Output, 1 x Ignition Digital Input, Switched Power Out

Configure iButton® and RFID readers for Driver ID

Accident and rollover detection, speeding, harsh braking, and more

Optional OBDII or Cigarette Lighter Power Harness available for Plug and Play Installation



# Kingfisher Supreme

CELLULAR 2G OR 4G LTE-M / NB-IOT



Ultra-rugged, feature-rich vehicle, trailer, or heavy equipment tracking device with inputs/outputs, remote immobilization for fleet management, equipment monitoring, driver ID, theft recovery, and more.

## FEATURES

High-precision GPS/GLONASS tracking device plugs into existing OBDII ports

Hardwired to permanent power for real-time tracking

2 x Digital Inputs, 1 x Switched, Ground, Digital Output, 1 x Ignition Digital Input, Switched Power Out

Configure iButton® and RFID readers for Driver ID

Hardwired to permanent power for real-time tracking

Run hour monitoring, accident and rollover detection, speeding, harsh braking, and more

# Kingfisher Coldchain

CELLULAR 2G OR 4G LTE-M / NB-IOT



Feature- rich battery-powered or powered GPS tracking device with inputs/outputs, I<sup>2</sup>C Sensor Interface, and WIFI Positioning for indoor and outdoor asset tracking and sensor monitoring applications.

## FEATURES

High-precision GPS/GLONASS tracking device and Wifi Positioning for Indoor Asset Tracking

1 x Analog Input, 2 x Digital Input, 1 x Switched Ground Digital Output, 1 x Ignition Digital Input, Switched Power Out

I<sup>2</sup>C Sensor Interface

Weatherproof and ultra-rugged IP67 housing with compact and ergonomic design

Flexible Power Options- 3x AA Batteries with up to 7 years battery life or wired to permanent power

Built in Battery Meter for remote Battery Life Monitoring and Remaining Life Predictions



# Parrot Range

High powered multi-channel datanodes that can measure multiple parameters at once, control and monitor pumps and a variety of other inputs

## **COST EFFECTIVE TELEMETRY UPGRADABILITY**

The existing DN radio network is modular and can therefore be unplugged and replaced. This allows us to alter the backbone of the local area network (LAN) over time and allows clients to cost effectively take advantage of changing technology

## **SELF-HEALING MESH TECHNOLOGY**

Our existing radio frequency LAN can consist of various nodes all communicating with each other and to a Gateway connected to the internet. If a single DN failure occurs, the system can maintain communications for all other units by finding other routes through the network

## **OUTPUT CONTROL**

This configuration allows users to automatically or manually switch connected devices such as pumps and irrigation equipment, or any electrically switchable operating system for light industrial clients

## **REALTIME INTERACTION**

Update rates can be altered in the web interface where clients have a specific need to improve the "realtime" response of the system

## **ALERTS**

Notifications are available via any or all of the web interface, email, and SMS

# Parrot 4 Channel Stand Alone

ZIGBEE, 4G LTE-M / NB-IOT or SATELLITE



This system is a four channel radio telemetry unit, suitable for monitoring and or control applications, where no more than four inputs or outputs are required at the location.



## FEATURES

This unit connects to the network via a modem and is suitable where there is 4G or NB-IoT mobile coverage and where a small number of sites are required, that are spread over a wider area. If a radio network is installed at a later time, the modem can be removed from the unit, and replaced with a radio module.

Depending on the solutions required at the site, there are a range of modules available that plug into the main board including

- Tank and channel level monitoring
- Weather station or weather sensors
- Soil moisture
- Flow meter, pressure sensor, flow switch
- Pump control – electric or diesel
- Solenoid control
- Water quality sensors

The system is supplied with enclosure, main board, modem, solar panel, mounting brackets, battery holder and 10 x AA NiMH batteries

Plug in modules for required solutions are additional. Antennas are separate as the appropriate antenna will be based on transmission distances required.



# Parrot 8 Channel Standalone or Gateway



ZIGBEE, 4G/NBIOT



Having the security of knowing the status of your pump is critical for efficient operations. The Parrot 8 Channel remote engine/pump monitoring and control solution provides access to the state of our engine and pump via our web interface. This gives you the confidence of knowing what is happening at all times especially if a problem arises. Should the pump shut down if there is a problem you will be notified via SMS email or both



## FEATURES

This system is an eight channel radio telemetry unit, suitable for monitoring and or control applications, where no more than eight inputs or outputs are required at the location.

This unit is suitable where there is 4G or NBloT mobile coverage.

The system allows for

- Remotely start and stop pumps
- Monitor the run state of the pump and receive alert on shutdown - via SMS email or both
- Monitor associated sensors (such as flow pressure and water level) and raise alerts on conditions out of the normal operating range

- Record historical data for immediate and future reference

The system is supplied with an enclosure, main board, modem, radio, solar panel, battery holder and battery.

Does not include the mounts as the mounting option required will depend on the nature of the installation. Plug in modules for required solutions are additional. Antennas are separate as the appropriate antenna will be based on transmission distances required.



admin@theyabby.com.au  
theyabby.com.au  
13000 YABBY (92229)

As part of our complete water management support we can offer a range of services

- Site Assessment
- Modelling (Water Balance and Flood)
- Monitoring (Water Quality)
- Dam Survey
- Engineering Design
- Planning Support
- Project Management

Please contact us to discuss your next project or development.